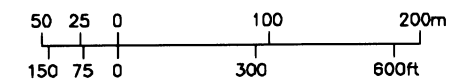




Zoning By-law No. 39-2000  
Township of  
**North Glengarry**  
Dalkeith

**Schedule L**

Scale 1:5000

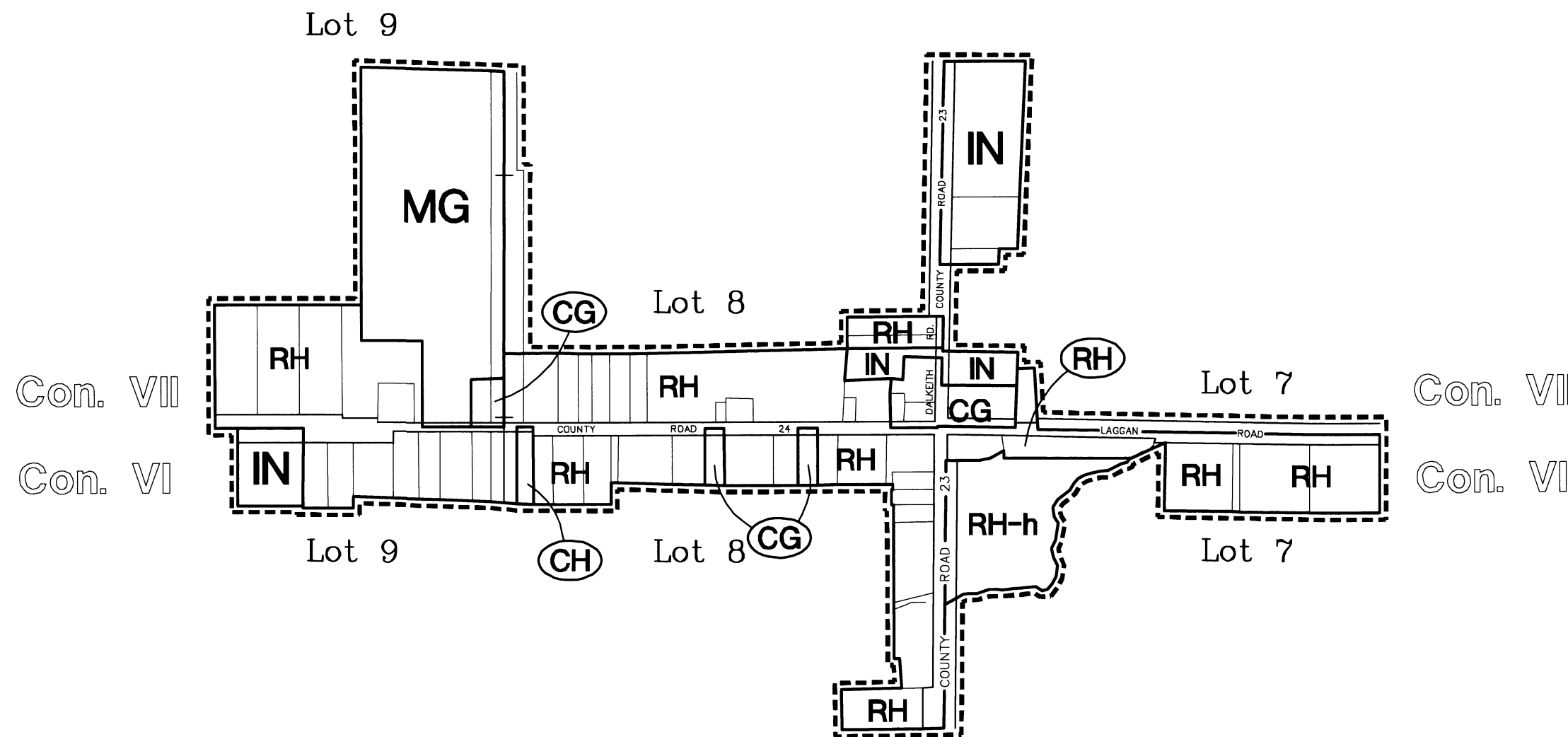


**Zone Classifications:**

|                    |                 |
|--------------------|-----------------|
| Residential Hamlet | <b>RH</b>       |
| General Commercial | <b>CG</b>       |
| Local Commercial   | <b>CL</b>       |
| Highway Commercial | <b>CH</b>       |
| Institutional      | <b>IN</b>       |
| Open Space         | <b>OS</b>       |
| General Industrial | <b>MG</b>       |
| Waste Disposal     | <b>WD</b>       |
| Flood Plain        | <b>FP</b>       |
| Exception          | <b>-numeral</b> |
| Holding            | <b>-h</b>       |

**Legend:**

|                       |  |
|-----------------------|--|
| Sub-Schedule Boundary |  |
| Roads                 |  |
| Legal Fabric          |  |
| Railway               |  |
| Zone Boundary         |  |



Office Consolidation: 15/08/02  
Office Consolidation: 12/12/06  
Office Consolidation: 12/31/09  
Office Consolidation: 09/03/13

**Certificate of Authentication**

This is Schedule 'L' to By-law No. 39-2000, passed this 14th day of August, 2000.

GRANT CRACK Mayor  
LEO POIRIER Clerk

