

NORTH GLENGARRY

CCTV inspection report

Alexandria

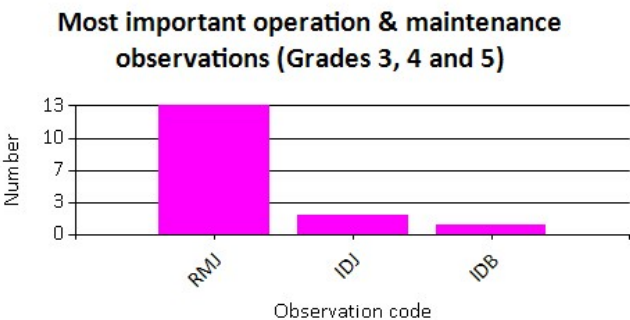
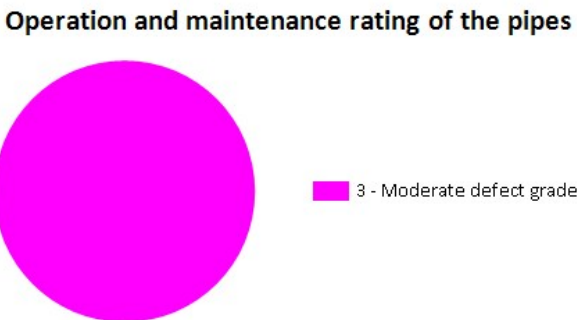
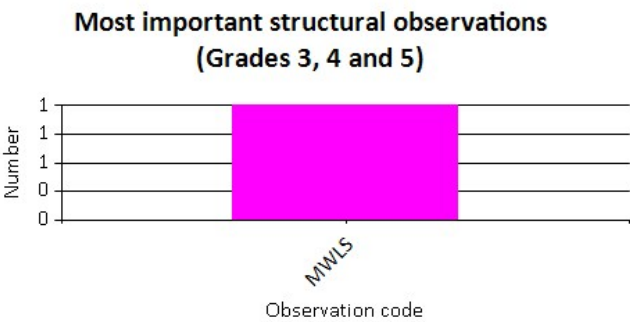
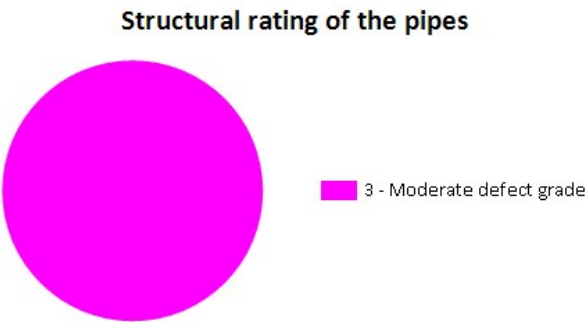
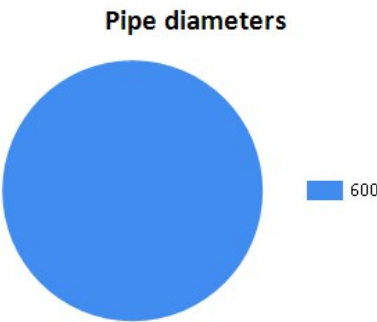
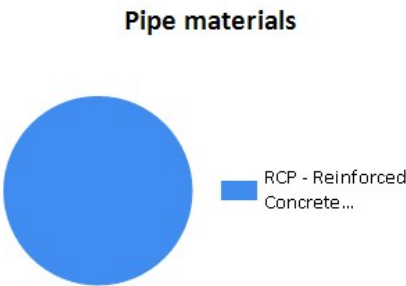
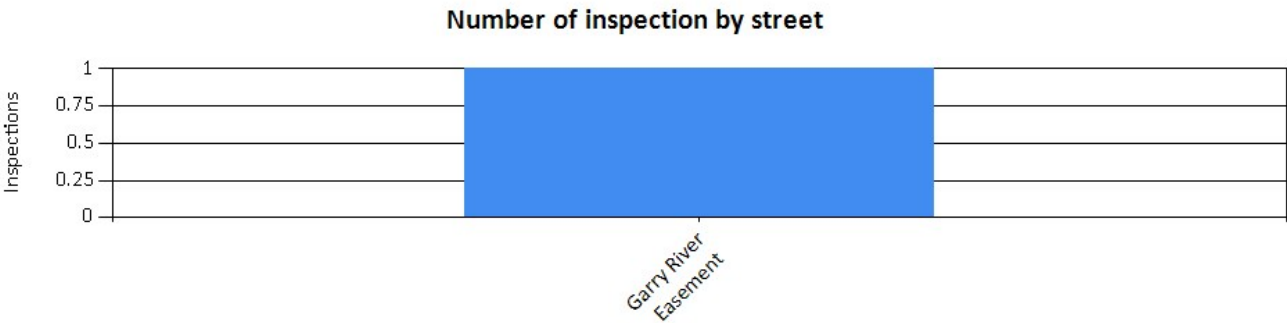
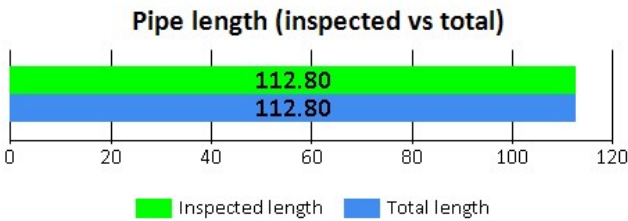
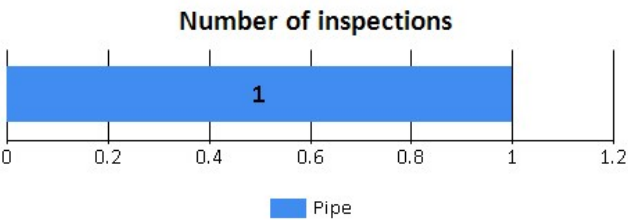
North Glengarry

Garry River Easement

13 december 2024

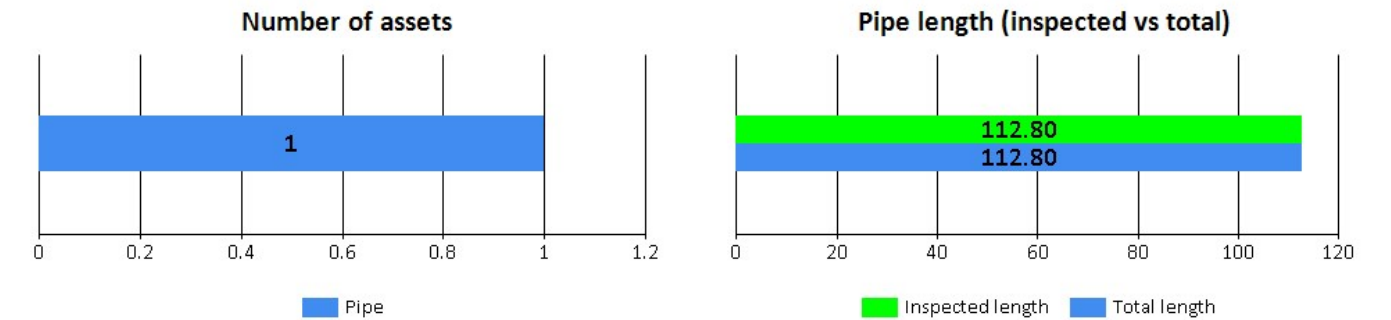
	Page
1. Graphical summary of the report	3
2. Map of inspected pipes	4
3. Index of pipes	5
4. Structural rating map	6
5. Structural rating	7
6. O&M rating map	8
7. O&M rating	9
8. Pipe summary and condition details	10
9. Vision Report© Legend	20

1. Graphical summary of the report



2. Map of inspected pipes

3. Index of pipes

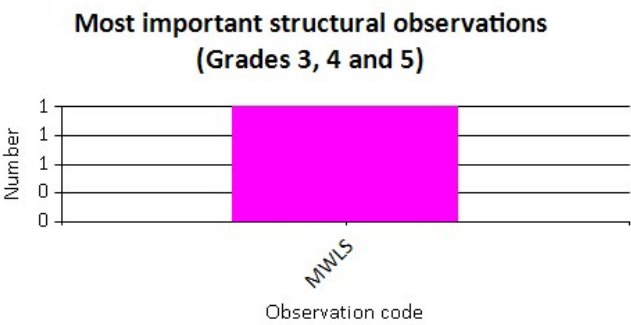
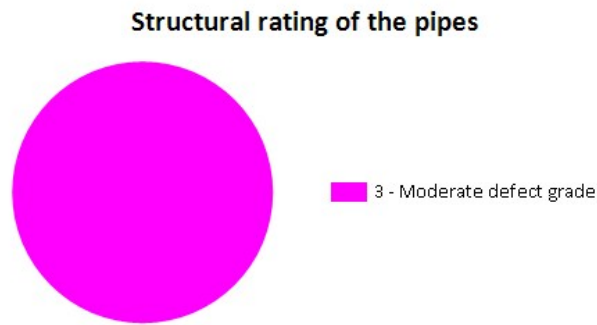


1 item

Pipe	Upstream	Downstream	Street	Date	Inspected	Total	Completed	Inspection Status	Page
50-40	50	40	Garry River Easement	13 december 2024, 2:39 PM	112.8	112.8	100 %	Complete Inspection	10

4. Structural rating map

5. Structural rating



1 item

3 - Moderate defect grade (1 of 1 items)

Score	Quick	Index	Pipe	Upstream	Downstream	Street	Page
5	3121	2.5	50-40	50	40	Garry River Easement	10

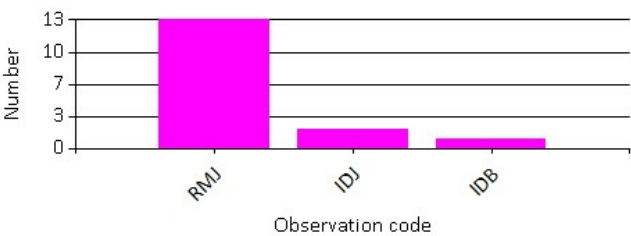
6. O&M rating map

7. O&M rating

Operation and maintenance rating of the pipes



Most important operation & maintenance observations (Grades 3, 4 and 5)



1 item

3 - Moderate defect grade (1 of 1 items)

Score	Quick	Index	Structural	Pipe	Upstream	Downstream	Street	Page
132	3B23	1.4	3	50-40	50	40	Garry River Easement	10

8. Pipe summary and condition details

Pipe identification

Pipe: 50-40
Direction of flow: 50 --> 40

Pipe location

Road:	Garry River Easement	<u>UPSTREAM</u>	<u>DOWNSTREAM</u>
Crossroad:		Easting (X):	Easting (X):
Drainage Area:		Northing (Y):	Northing (Y):
City:	Alexandria	Elevation (Z):	Elevation (Z):
Location:		GPS Accuracy:	
Location details:		Coordinate System:	
Owner:		Vertical Datum:	
Road segment:			

Pipe characteristics

Pipe Use:	Sanitary Sewage Pipe	Surveyed Length:	112.8
Height:	600	Total length:	112.8
Width:		Joint length:	
Shape:	Circular	Rim/Inv.:	
Material:	Reinforced Concrete Pipe	Grade/Inv.:	
Lining:		Rim/Grade:	
Coating Method:		Rim/Inv.:	
Year Constructed:		Grade/Inv.:	
Year renewed:		Rim/Grade:	

Additional details

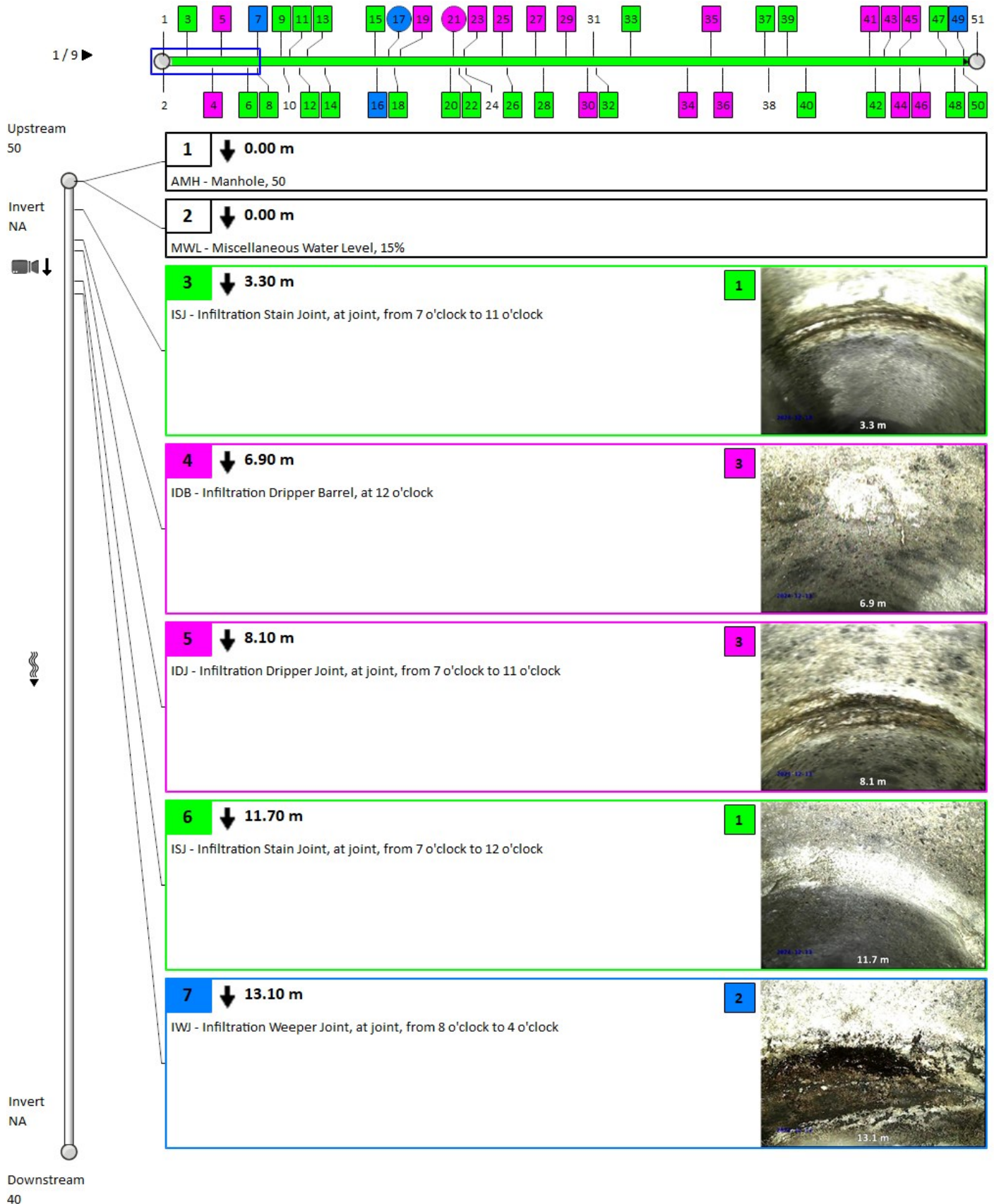
Inspection standard:	PACP 7.0	Surveyed by:	AUGUSTIN Y.DEGBE
Inspection Status:	Complete Inspection	Certificate Number:	U-1024-C1869
Date:	13 december 2024, 2:39 PM	Reviewed By:	
Project:		Reviewer Certificate:	
Customer:	HYD-24039	Pre-Cleaning:	Heavy Cleaning
PO number:		Date cleaned:	
Work Order:		Media Label:	
Purpose:		Unit of measurement:	Metric
Weather:	Dry	Sheet Number:	
Flow control:	Not Controlled	Additional information:	
Used Technology:			

Structural rating	O&M rating	Overall rating	Failure
Peak: 3	Peak: 3	Peak: 3	Consequence:
Quick rating: 3121	Quick rating: 3B23	Quick rating: 3B24	Likelihood: 4
Score: 5	Score: 132	Score: 137	Risk:
Index: 2.5	Index: 1.4	Index: 1.4	

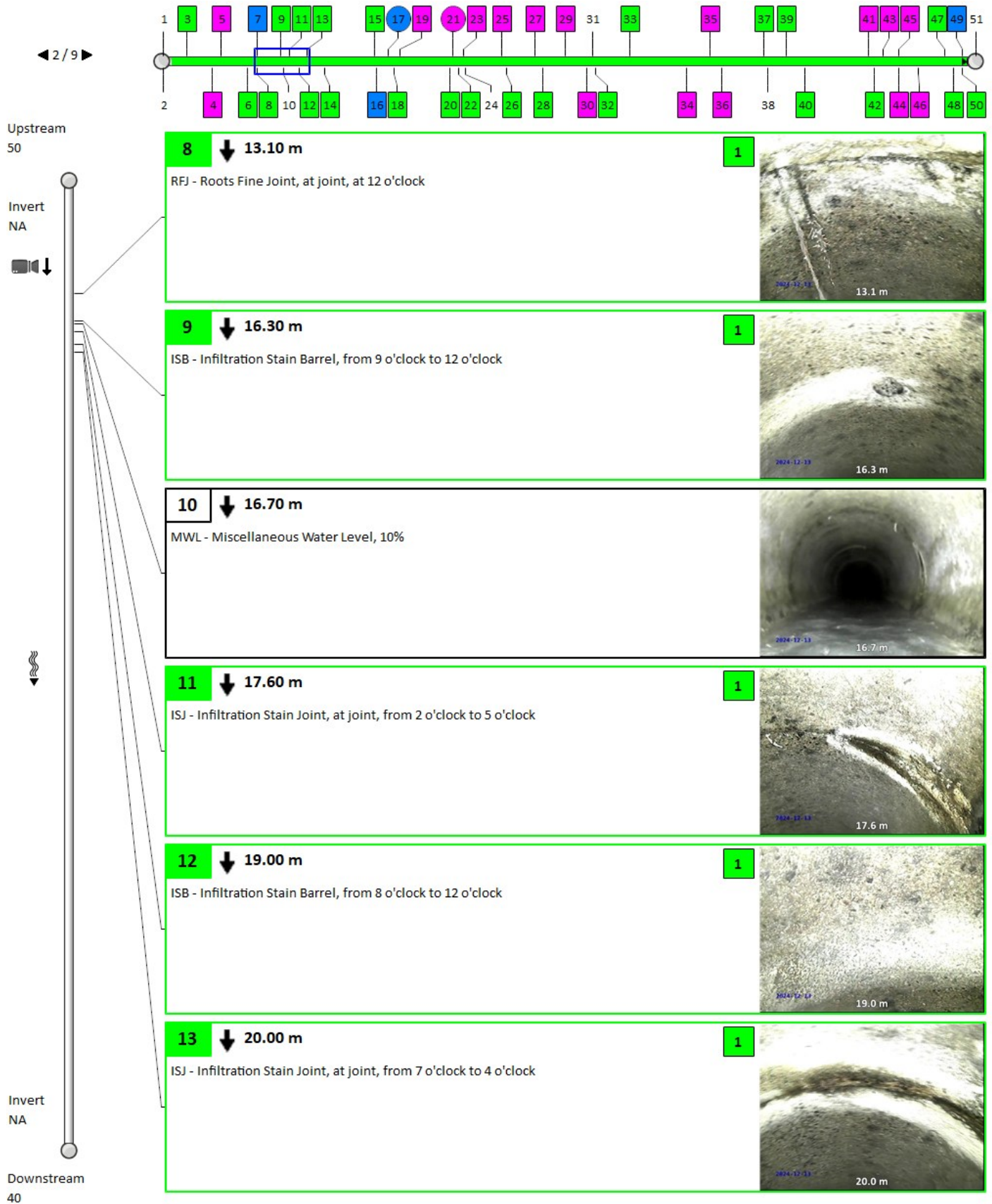
Other information

Information 1:	Information 6:
Information 2:	Information 7:
Information 3:	Information 8:
Information 4:	Information 9:
Information 5:	Information 10:

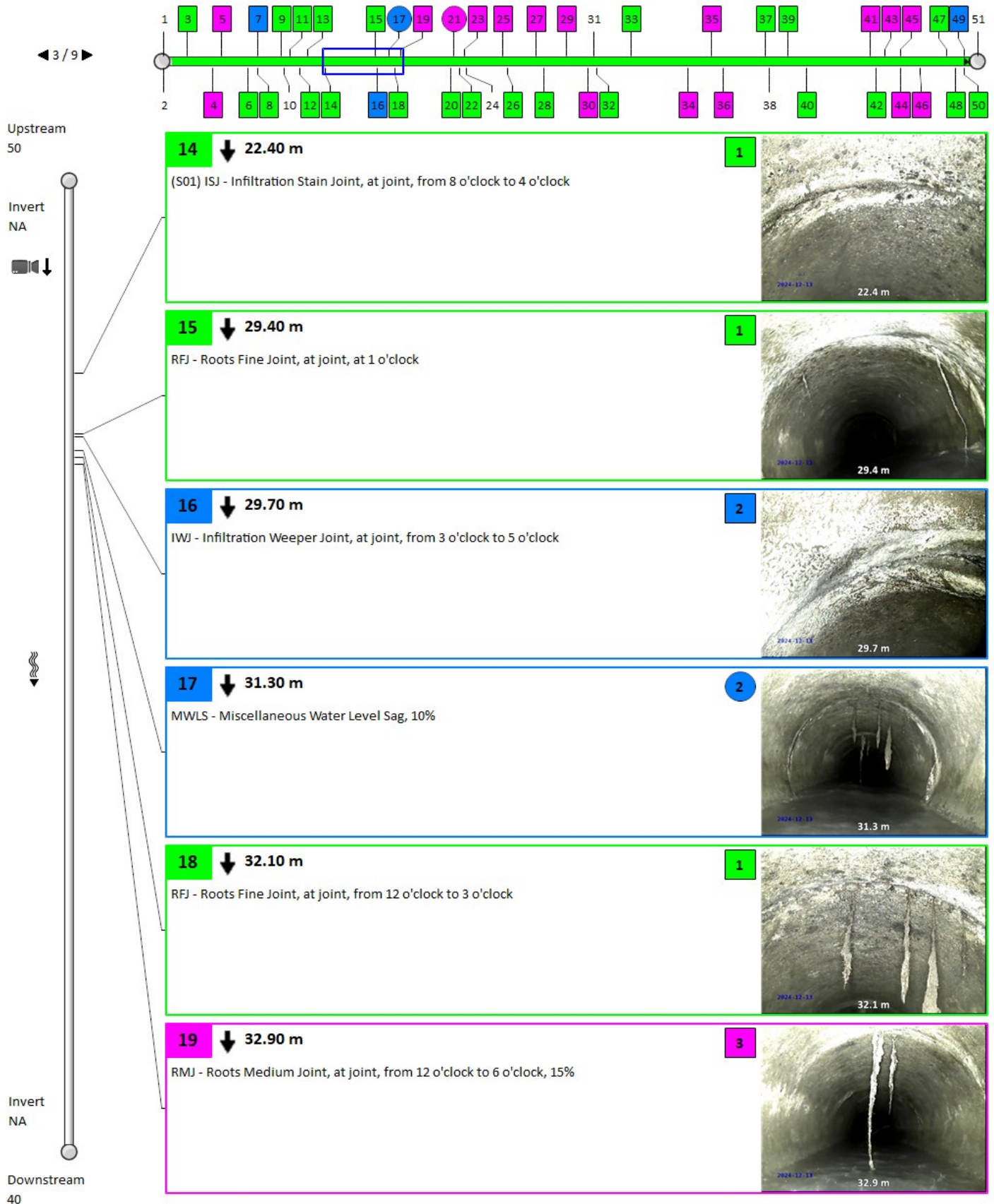
8. Pipe summary and condition details



8. Pipe summary and condition details



8. Pipe summary and condition details



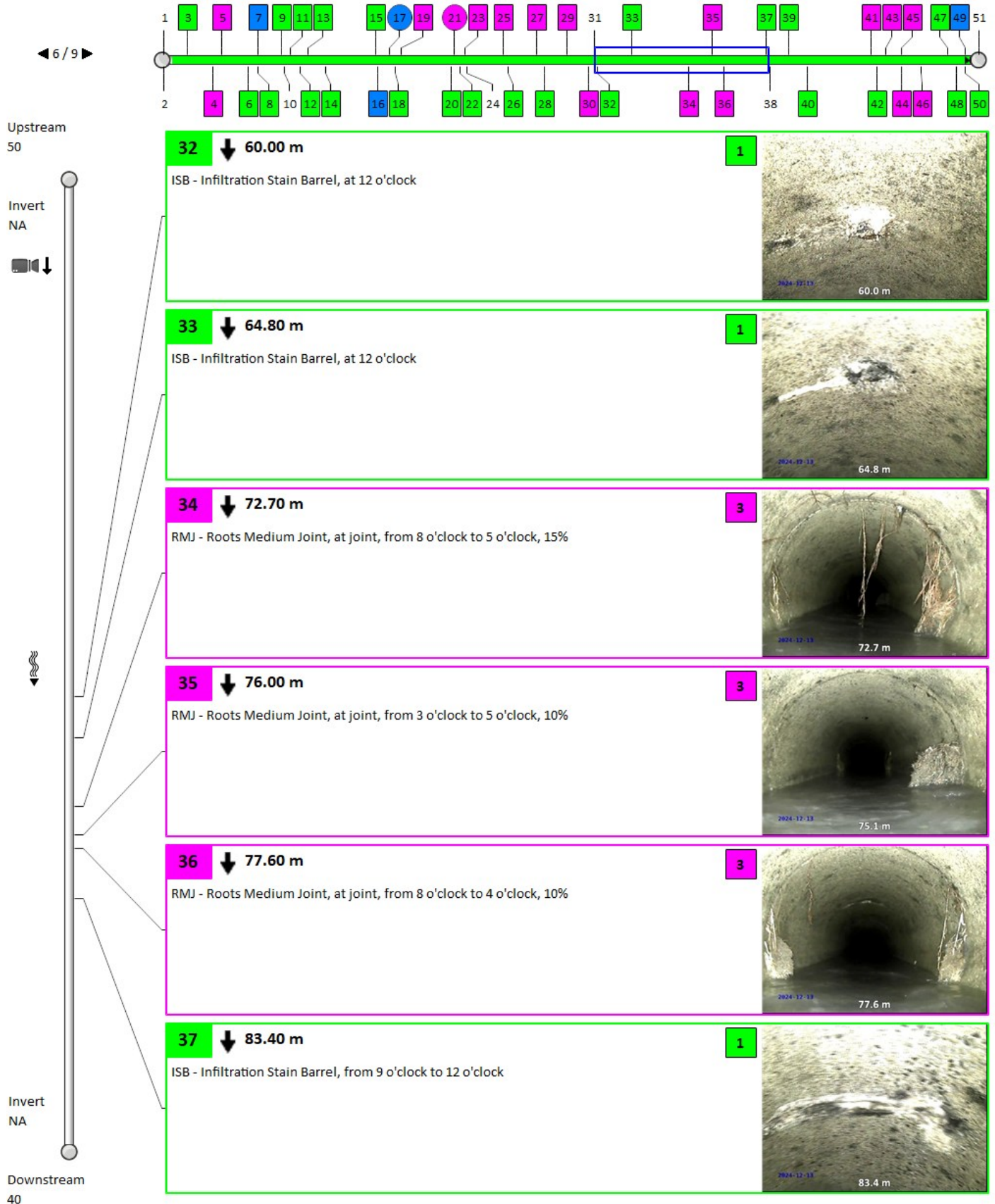
8. Pipe summary and condition details



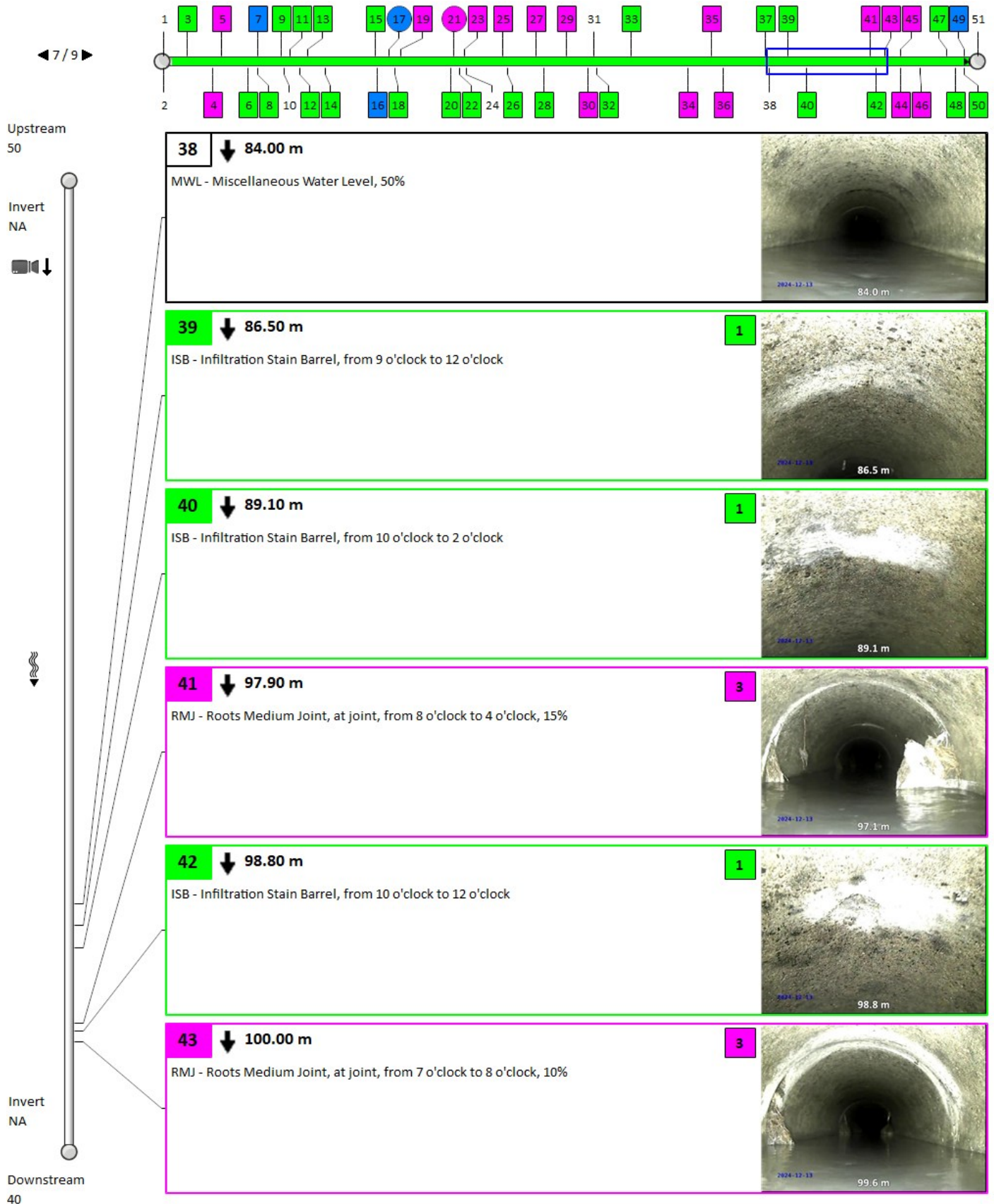
8. Pipe summary and condition details



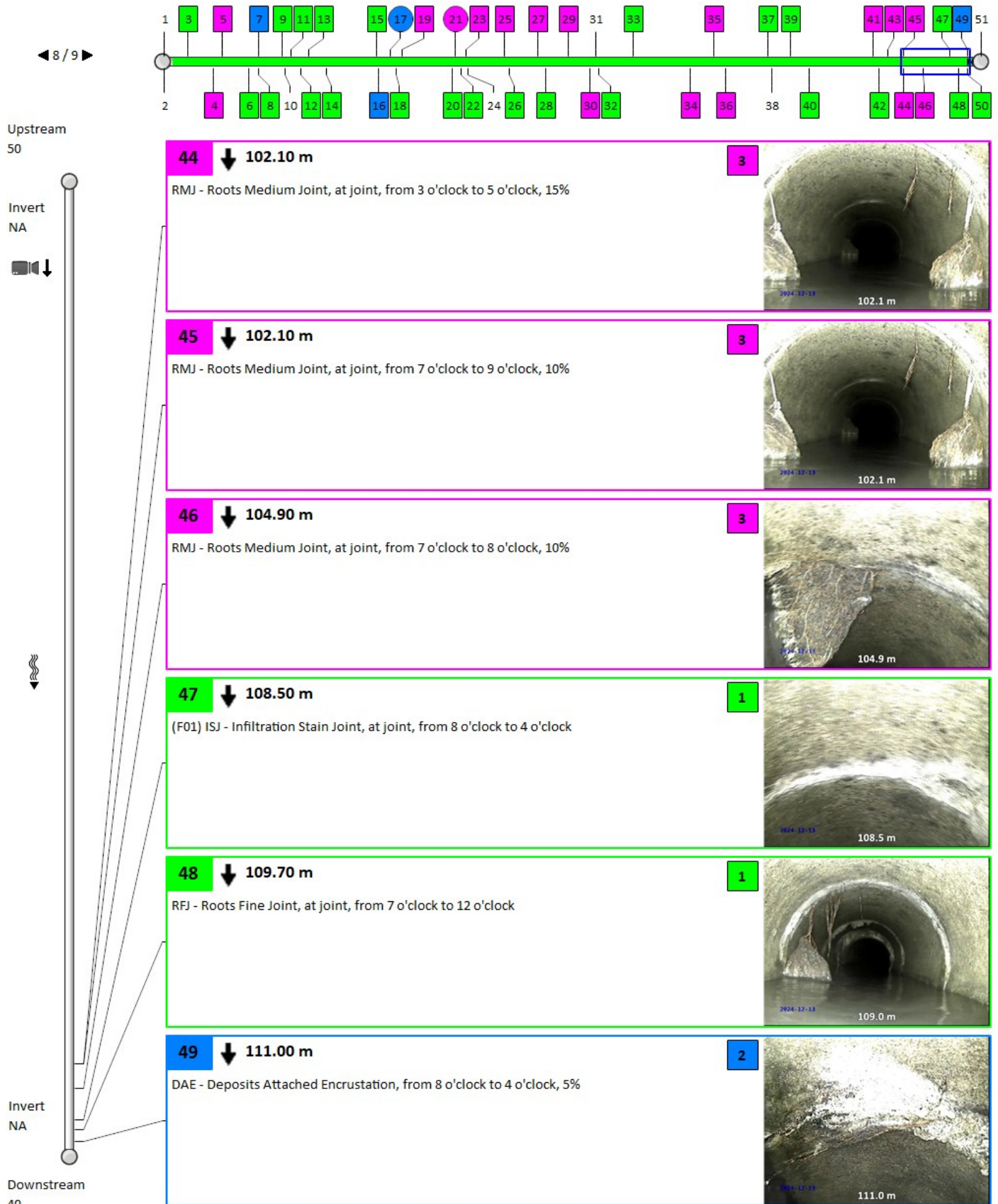
8. Pipe summary and condition details



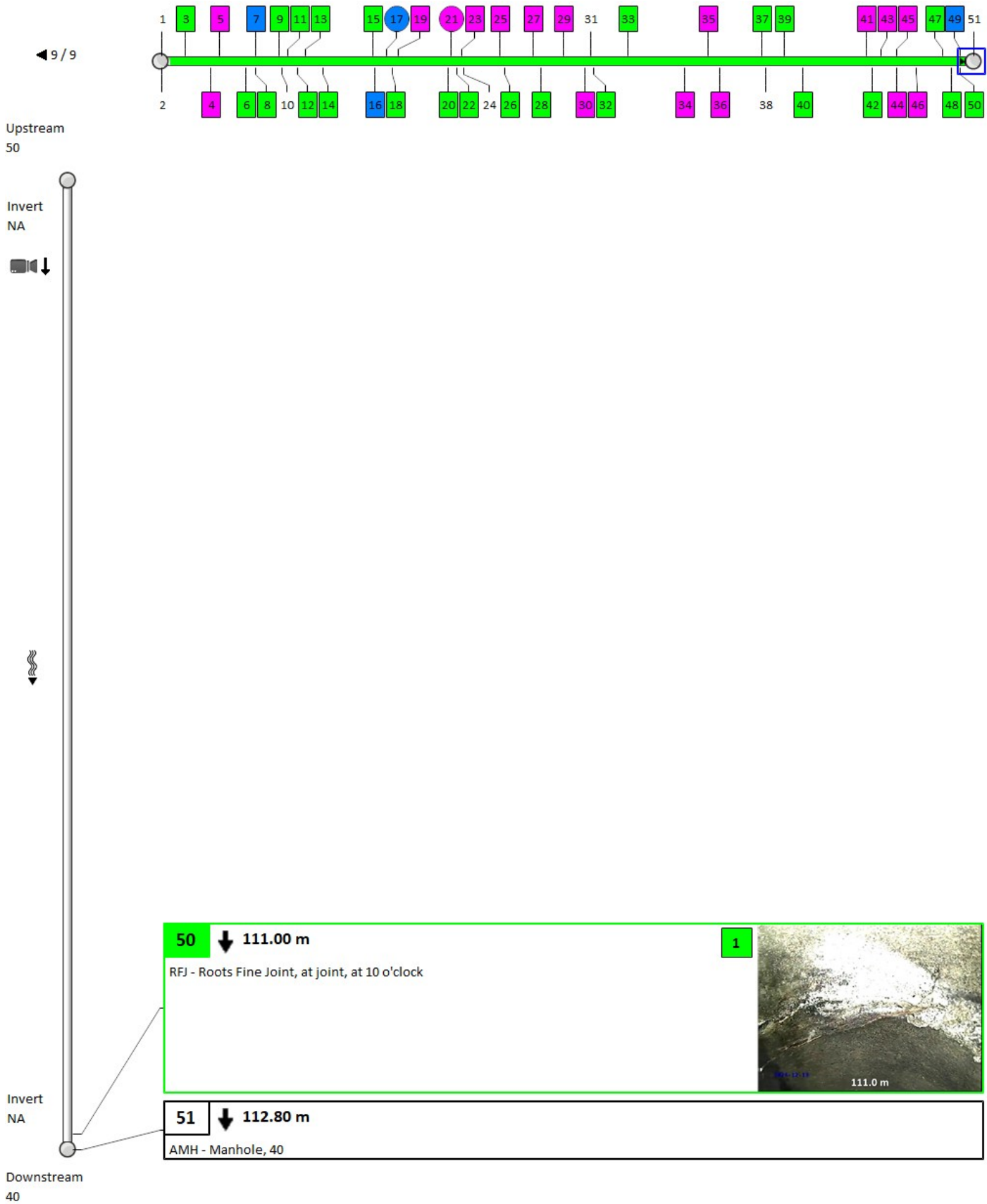
8. Pipe summary and condition details

















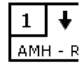
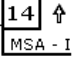
8. Pipe summary and condition details



8. Pipe summary and condition details



Vision Report© Legend

	The numbers sequentially identify each observation. They allow you to find complete descriptions and related photos throughout the pages. Note that when the pipe contains too many observations, the Vision© report hides the least important observations to optimize the display*.
60	A number with neither a square nor circle indicates a general observation.
	A circled number indicates a structural anomaly. The color of the circle indicates the severity of the anomaly on a scale of 1 to 5, 5 being the most severe: green=1, blue=2, magenta=3, orange=4 and red=5.
	A number in a square indicates an operation and maintenance anomaly. The color of the square indicates the severity of the anomaly on a scale of 1 to 5, 5 being the most severe: green=1, blue=2, magenta=3, orange=4 and red=5.
◀ 3 / 31 ▶	Indicates the current page number of the inspection report.
	The blue square indicates a section of the pipe; this section is covered in detail on the current page of the report.
	The green line indicates the inspected part of the pipe. The remaining white line indicates the uninspected part of the pipe.
	Indicates the hold points on the camera during an inspection.
	Indicates the hold points on the camera during the reverse inspection.
	Indicates that a reverse inspection was carried out, however the camera did not reach the initial inspection hold point. (the hold point of the initial inspection)
	Indicates that a reverse inspection was carried out and that it has joined (has arrived at) the initial inspection hold point.
401-059B 	Identifies the start manhole number. Note that this manhole is not necessarily the upstream manhole of the pipe.
401-631 	Identifies the end manhole number. Note that this manhole is not necessarily the downstream manhole of the pipe.
	A downward arrow indicates that the inspection was carried out in the direction of the current, whereas an upward arrow indicates an inspection against the current. Note that the manhole located on the upper left of the page is always the start manhole, but not necessarily the upstream manhole of the pipe.
	This camera followed by a downward arrow is located on the upper left of the vertical pipe; it indicates that an inspection was done from this manhole.
	When the second camera appears on the bottom left page it means that a reverse inspection was carried out. Information about the reverse inspection is included in the report, thereby combining both inspections.
Invert 3.40	The measurement shown under the word <Invert> indicates the measurements between the frame and the pipe captured during the inspection. This measurement is available at the top left for the start manhole and the bottom left for the end manhole. If the invert was not measured during the inspection, an <NA> mark will be displayed.
	The downward bold arrow to the right of the observation number indicates that this observation was captured during the initial inspection.
	The blank arrow pointing upwards and located to the right of the observation number indicates that this observation was taken during the reverse inspection period, thereby confirming that this report combined both inspections.
18.40 m	Located to the right of the observation number is a number identifying the observation distance in relation to the start of the pipe.
SRV - Armature visible	A full description of the observation code according to the protocol used.

*Any hidden observations are readily accessible from the database as well as in other CTSpec report templates.

** CTSpec inc. reserves the right to modify, eliminate or add to the product features described in this pamphlet without notice.

© 2012 CTSpec inc. All rights reserved.